

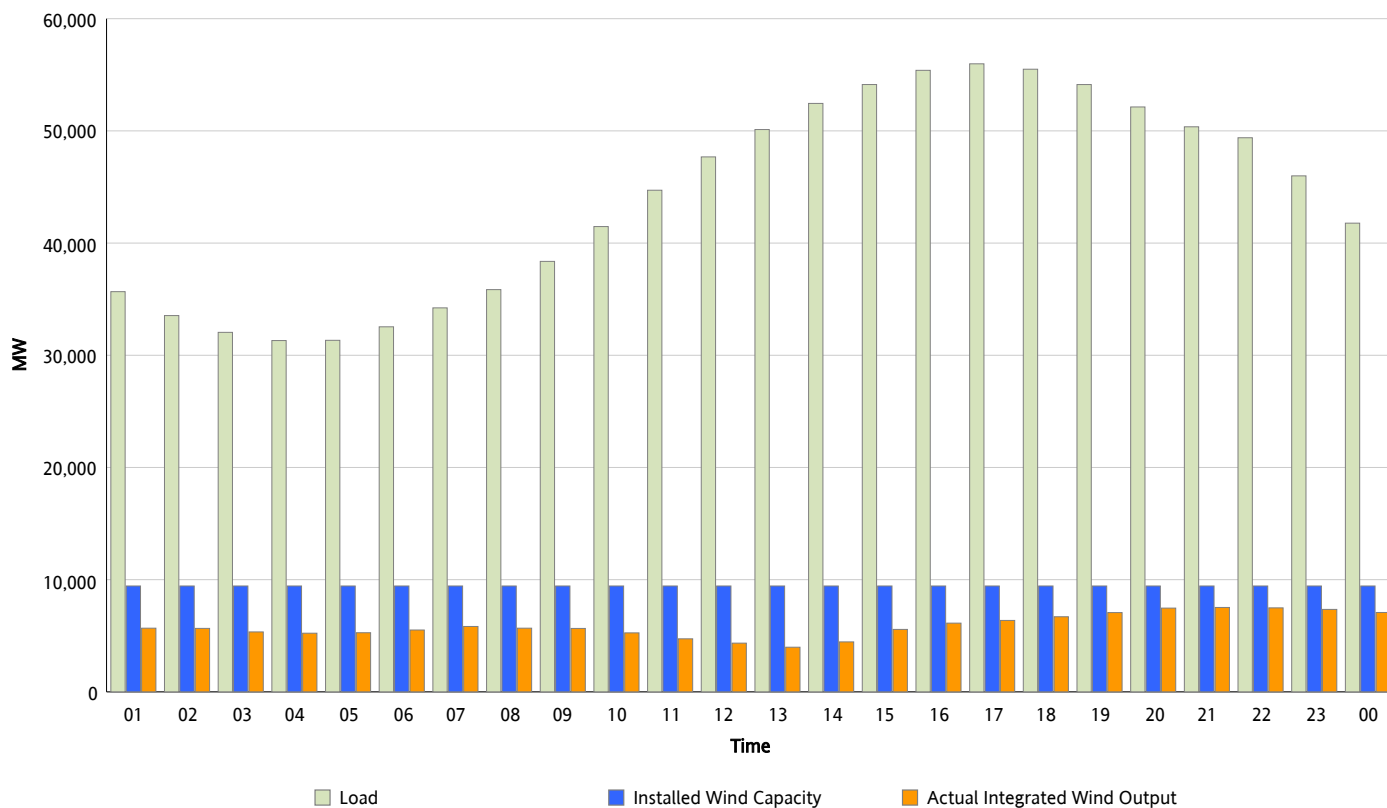


ERCOT Grid Operations

Wind Integration Report : 06/18/2012

Peak Load	55,980 MW
Load Peak Hour (HE)	17
Wind Over Peak	6,368 MW
Wind Record 04/13/12	7,925 MW
Max Wind Value*	7,625 MW
Wind Peak Time	19:55
Wind Integration %	14.88 %

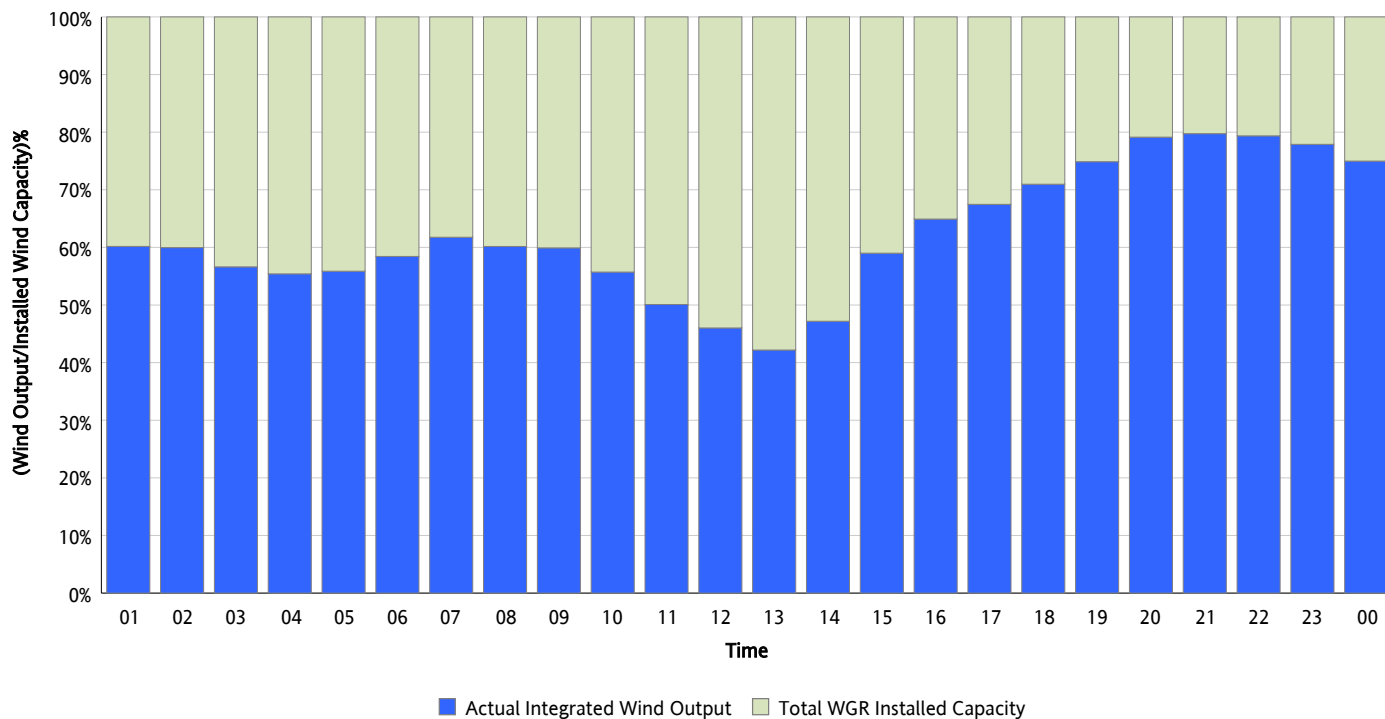
Hourly Average Actual Load vs. Actual Wind Output
06/18/2012



** Wind Record and Wind Max represent instantaneous values and the rest of the values are integrated over the hour*

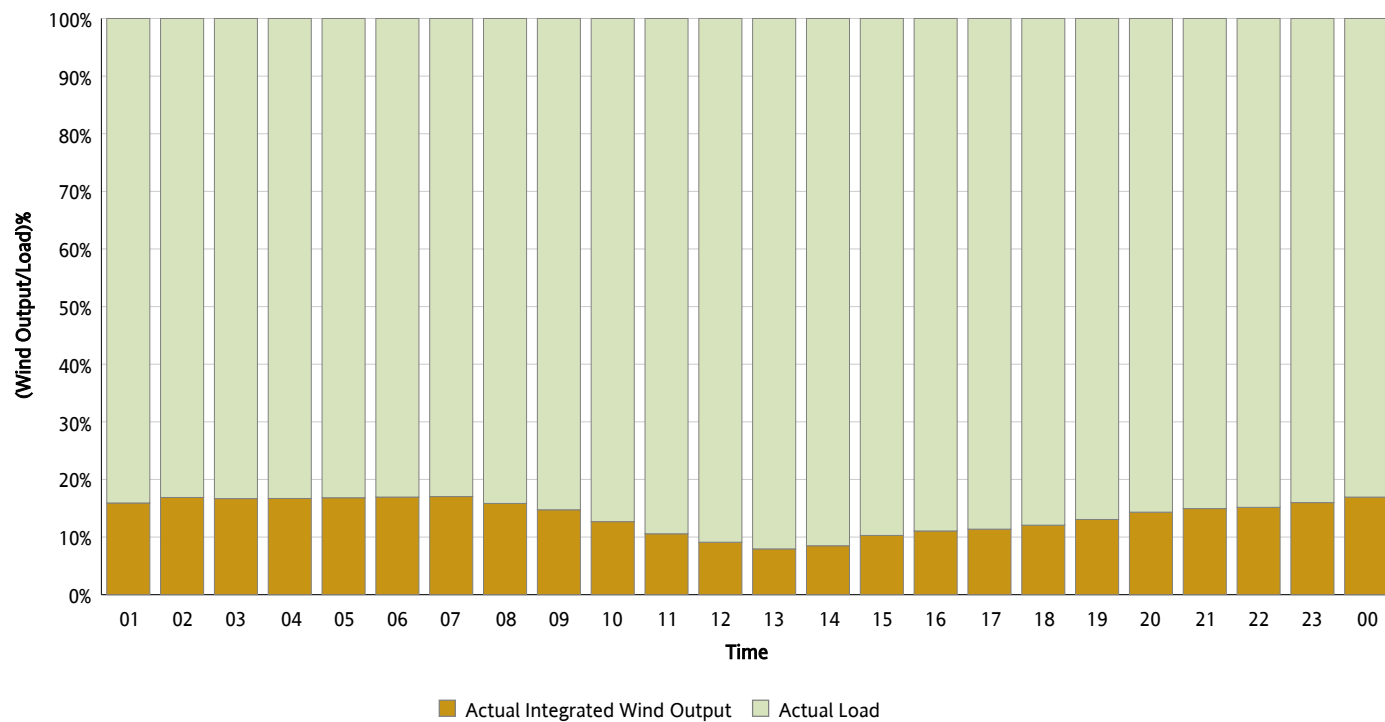
Actual Wind Output as a Percentage of the Total Installed Wind Capacity

06/18/2012



Actual Wind Output as a Percentage of the ERCOT Load

06/18/2012



ERCOT Load vs. Actual Wind Output

06/11/2012 - 06/18/2012

